



ONGOING OPERATIONS FOR LAFARGE CEMENT PLANT CONSTRUCTION

Ärk Global to successfully complete heavy transport for Lafarge Cement Plant in Martres-Tolosane, France by 05 July 2019 .

- 1 MORE THAN 12,000 CBM MOVED
- 2 TRANSPORTATION ROUTE EXCEEDS 300KM
- 3 SUCCESSFUL DELIVERY OF 300 PACKAGES
- 4 MARKS EXPANSION OF OPERATIONS TO EUROPE

Sète, France – on 11 February 2019, MV Maria Carla arrived at Port de Sète, France with heavy modules of general cargo for the ongoing operations in the construction of Lafarge Cement Plant in Martres-Tolosane. Immediately after, Ärk's offloading crew at the port commenced the offloading operations on 12 February 2019.

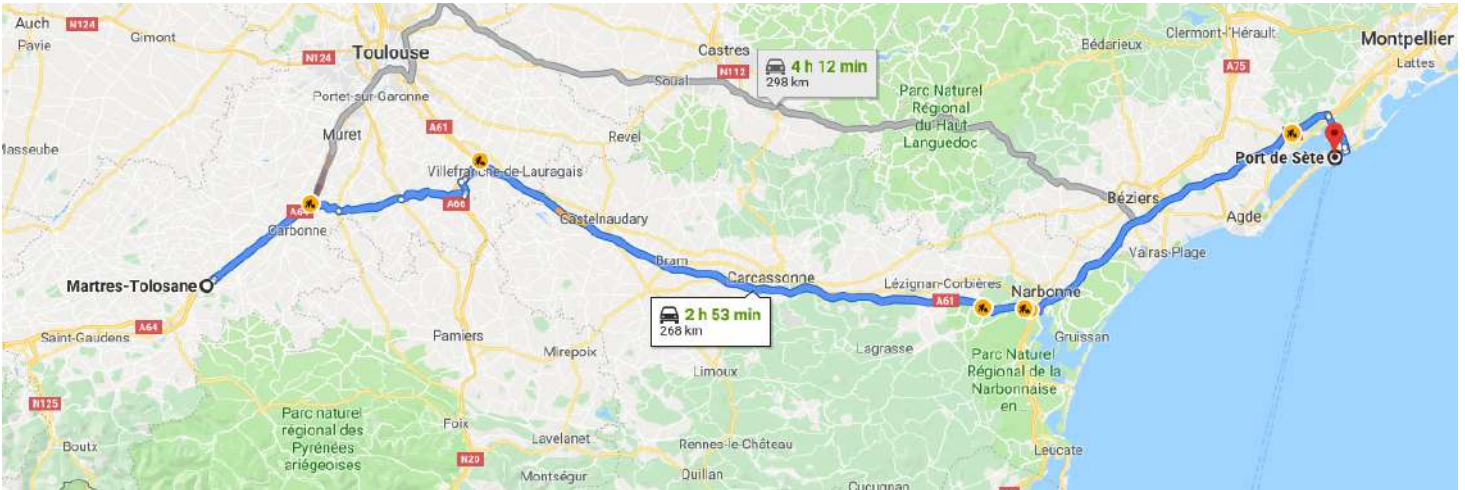
The team in France was led by Heavy-lift Operations Department based in Operating Headquarters in Dubai – UAE. Following successfully executed consecutive delivery of 6 shipments, Ärk Global is set to complete the project in the month of July, 2019.



Ärk team receiving cargo at Port de Sète, France

OFFLOADING OPERATIONS

Ärk Global France was tasked with transporting 12,000 CBM of cargo from Port de Sète to the project site in Martres-Tolosane that is located more than 298km away.



Route from Port de Sète to Martres-Tolosane

The heaviest cargo of the 300 items, an accessory used in Kiln and Insulation weighed 69 tons - 1.18m (L), 4.83 (W), 4.37m (H) and cargo of highest length, an accessory used in Kiln and Insulation, was 4.83m in length.

The offloading of the 300 packages continued until Monday 18 February 2019. The heaviest 6 modules of the shipment were unloaded on the first day of the offloading operations. On the following day, 79 of the general packages were offloaded, and another 71 packages on the next day. On the third day of the offloading operations, 93 general packages were offloaded thus bringing the operations to an end the next day following the offloading of 48 packages.



Offloading operations at Port de Sète, France



Cargo heading off to the project site, Tolosane

The shipment consisted of three categories namely, 1st category (5m to 10m in Length, 2.55m to 3m in Width and up to 48 tons in weight), 2nd category (20m to 25m in Length, 3m to 4m in Width and from 48 tons to 72 tons in Weight) and 3rd category (above 25m in Length, above 4m in Width and above 72 tons in Weight) as categorized by the regulations of the French Government. And all cargo above 48 tons required the assistance of an escort team.



Cargo receiving operations at Port de Sète, France



Cargo heading off to the project site following offloading



Cargo en route to the project site in Tolosane



Cargo being loaded on to vehicles during cargo receiving operations

DELIVERY TO THE SITE

As the offloading operations were being executed by one team, the delivery of the previously offloaded packages was commenced by another team from the storage facility at the port to the project site on 18 February following the clearance of the packages at customs.



Delivery of cargo at its inception

HIGHLIGHTS OF THE DELIVERY OPERATIONS

Due to the peculiar dimensions of certain cargoes, Ärk Global operations team based in France had to coordinate with the SNCF (Société Nationale des Chemins) in order to deliver the cargo over a railway track located along the designated route to the project site by dismantling a railway wire for a temporary duration.



Delivery of cargo to the project site

Handling and transportation of cargo of unique dimensions pose a distinct challenge in terms ensuring the safety of the cargo. Specific protective measures were taken to eradicate even the minimal damage to the cargo during handling and transportation in compliance to the HSE standards.

Cargo of 1st category took 6 to 7 hours to deliver from the Port to the Project site while cargo of 2nd and 3rd categories required around 1 to 3 days.



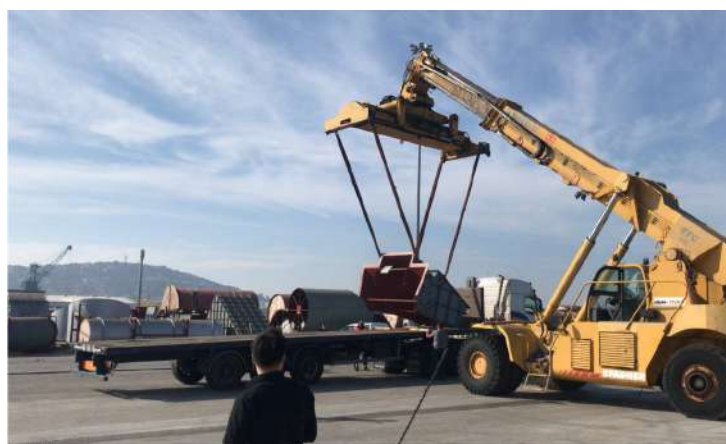
Cargo on the way to the project site



Delivery operations a go!



Delivery of cargo to the project site



Offloading the cargo from the vessel



Cargo at the Lafarge Cement Plant Project site



Project site of Lafarge Cement Plant